

NEW

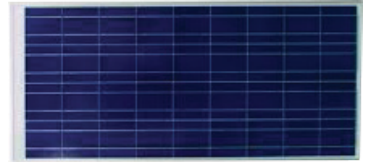
HIGH VOLTAGE PV MODULES

High Voltage Solar PV Modules

- Suitable for use in Solar Pumping Applications
- IEC Compliant: 61215, 61730
- Positive Power Tolerance
- Highly Reliable Anti-Reflective Coated Glass
- 120/144 Cell High Voltage Configuration

Mechanical Characteristics

Cells: Polycrystalline
 Construction: 3.2mm Thick, Low Iron Tempered Glass
 Frame: Anodized Aluminum Alloy
 Junction Box: **IP65**



Module Warranty

• 10 Year Limited Power output Warranty • 5 Year Product Warranty

| Code | Maximum Power (Pmax) | Voltage @ Pmax (Vmp) | Current @ Pmax (Imp) | Open-Circuit Voltage (Voc) | Short-Circuit Current (Isc) | Dimensions L x W x H |
|--------|----------------------|----------------------|----------------------|----------------------------|-----------------------------|----------------------|
| RHV260 | 260W | 63.04V | 4.15A | 75.52V | 4.52A | 1627 x 1025 x 40mm |
| RHV300 | 300W | 75.17V | 4.03A | 91.67V | 4.2A | 1934 x 1021 x 40mm |

Solar Panel Voltage Booster

The Micro-Care Voltage booster is designed to interface with and boost the voltage of a standard Solar PV panel (17-35V) to the levels required for use with borehole pumps.

Example of application would be in rural or farming areas where grid electricity is not always available close to water sources such as boreholes and dams.

Operating as a high frequency DC / DC converter the unit allows the pump controller to track the maximum power from the solar panel through the regulator in such a way that the performance of the system and pump controller is not affected. 4.5kA Surge protection fitted to all inputs.

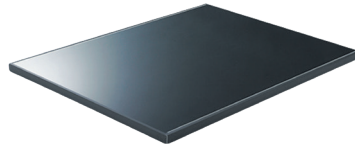


| Code | PV Voc Range | PV Vmp Range | Nominal Input Voltage | Nominal Output Voltage | Multiplication Factor | Rated Power | Dimensions L x W x H |
|---------|--------------|--------------|-----------------------|------------------------|-----------------------|-------------|----------------------|
| SVB-350 | 20V to 50V | 12V to 40V | ±37V | 350V | 9.7 | 360W | 70 x 100 x 36mm |
| SVB-550 | 20V to 50V | 12V to 40V | ±37V | 550V | 14.9 | 360W | 70 x 100 x 36mm |

CIS THIN FILM SOLAR PANELS

CIS Thin Film Solar Panels

- Production output in unfavourable conditions
- Excellent low light performance
- Light soaking effect raises output after installation
- High shadow tolerance
- High temperature stability
- Aesthetically pleasing black appearance

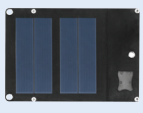
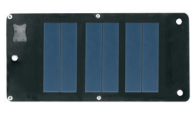



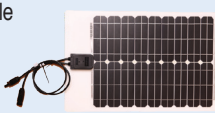
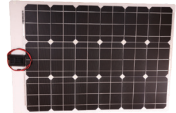
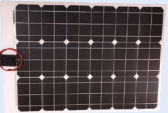


Features

- Dimensions: 1257 x 977 x 35mm
- Weight: 20kg
- Maximum Load: 2400Pa

| Code | SF1505-CIS |
|--------------------------|------------|
| Nominal Power | 165W |
| Open Circuit Voltage | 110V |
| Short Circuit Current | 2,20A |
| Current at Nominal Power | 1,93A |
| Voltage at Nominal Power | 85,5V |

FOLDABLE / FLEXIBLE SOLAR PANELS

| | Foldable  | Foldable  | Foldable  | Semi-Rigid  |
|-----------------------|---|---|--|---|
| Code | SHB-10W | SHB-20W | SHB-50W | SLP10F-12A |
| Max Power | 10W | 20W | 50W | 10W |
| Voltage Pmax (Vmp) | 17.42V | 17.46V | 17.7V | 18,0V |
| Current Pmax (Imp) | 0.57A | 1.18A | 2.87A | 0,56A |
| Open Voltage (Voc) | 21.2V | 21.6V | 21.8V | 22,5V |
| Short Circuit Current | 0.62A | 1.29A | 3.1A | 0,81A |
| Size | 220 x 320 x 40mm | 220 x 320 x 40mm | 360 x 450 x 60mm | 290 x 333 x 17mm |
| | Flexible Semi-Rigid  | Flexible Semi-Rigid  | Flexible Semi-Rigid  | Flexible Semi-Rigid  |
| Code | SLP20F-12A | SLP30F-12A | SLP40F-12A | SLP50F-12A |
| Max Power | 20W | 30W | 40W | 50W |
| Voltage Pmax (Vmp) | 18,0V | 18,0V | 18,0V | 18,0V |
| Current Pmax (Imp) | 1,11A | 1,67A | 2,22A | 2,77A |
| Open Voltage (Voc) | 22,5V | 22,5V | 22,5V | 22,5V |
| Short Circuit Current | 1,36A | 1,92A | 2,47A | 3,02A |
| Size | 470 x 333 x 17mm | 650 x 333 x 17mm | 775 x 333 x 17mm | 690 x 500 x 17mm |