

Product SPECIFICATION SHEET



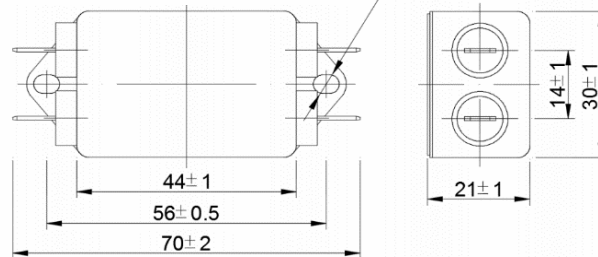
DL-10D1



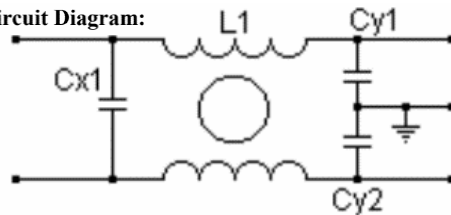
These filters are suitable for use with digital systems such as switch mode power supplies to suppress the continued or intermittent pulse interference especially for low impedance circuits

Model DL-	10D1
Rated Voltage	250VAC
Rated Current	10A
Frequency	500 / 60Hz
Test Voltage L - L (1min)	1500VDC
Test Voltage L - N (1min)	1500VAC

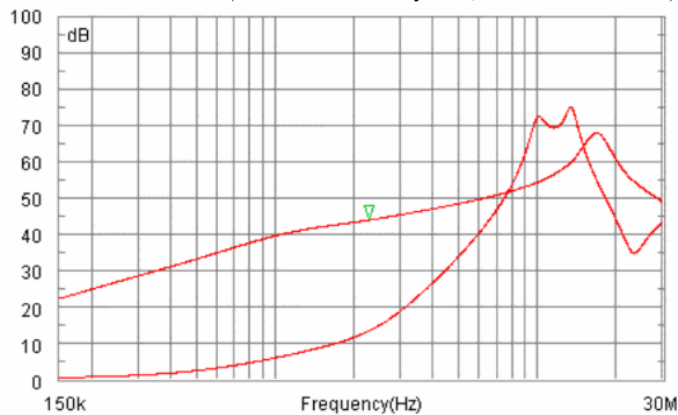
Outline Drawing and Dimensions:(mm) $2 \times \phi 3.8 \times 5.2$



Circuit Diagram:



4. Insertion Loss in dB:(Measured in 50Ω system ,as IEC/CISPR NO.17)



BRANCH CONTACT DETAILS

Johannesburg 010 202 3300
 Germiston 011 418 9600
 Cape Town 021 510 0710
 Pinetown 031 700 4215
 Riverhorse 031 492 4800

NATIONAL CALL CENTRE

Sales 010 202 3400
 Technical 010 202 3500

www.acdc.co.za