

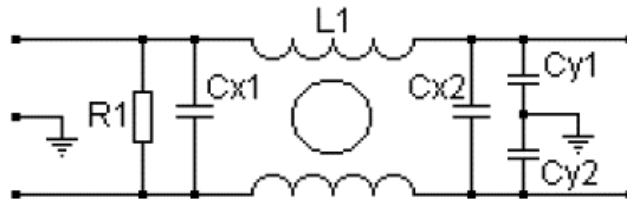
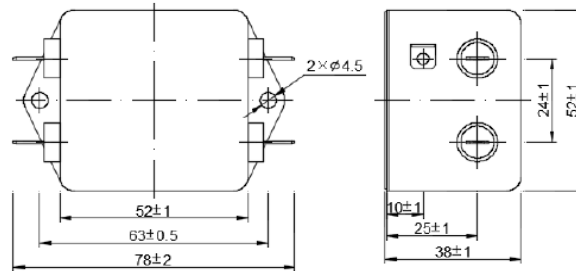
# Product SPECIFICATION SHEET

## DL-20D1

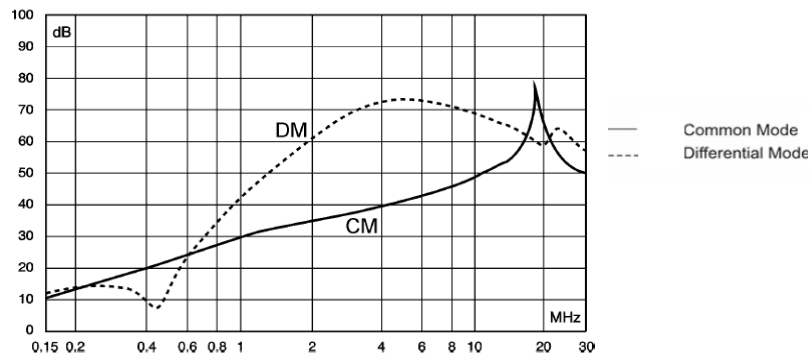
These filters are suitable for use with digital systems such as switch mode power supplies to suppress the continued or intermittant pulse interference especially for low impedance loads



| Model DL-                      |                |
|--------------------------------|----------------|
| Rated Voltage                  | 250VAC         |
| Rated Current                  | 20A            |
| Operating Frequency            | 50 / 60Hz      |
| Test Voltage L - L (1min)      | 1500VAC        |
| Test Voltage L - N (1min)      | 1500VDC        |
| Insulation $\Omega$ ( L - Gnd) | 3000M $\Omega$ |
| Leakage Current                | $\leq 0.5$ mA  |



Insertion Loss in dB: ( Measured in 50  $\Omega$  system, as IEC/CISPR NO.17 )



### BRANCH CONTACT DETAILS

Johannesburg 010 202 3300  
Germiston 011 418 9600  
Cape Town 021 510 0710  
Pinetown 031 700 4215  
Riverhorse 031 492 4800

### NATIONAL CALL CENTRE

Sales 010 202 3400  
Technical 010 202 3500

[www.acdc.co.za](http://www.acdc.co.za)