

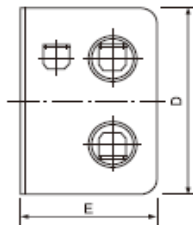
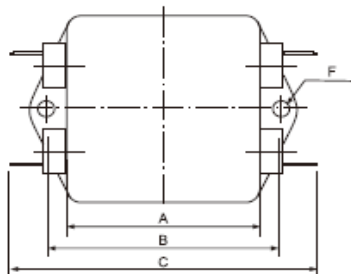
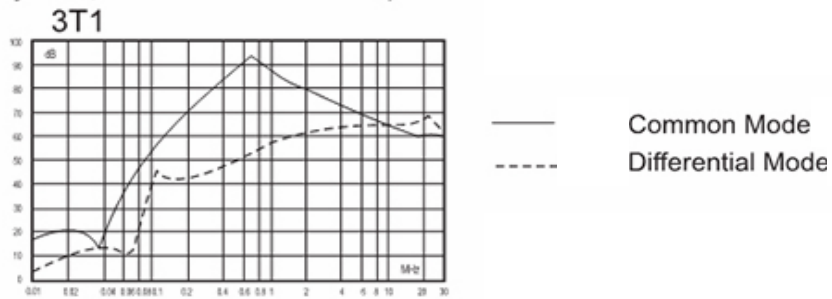
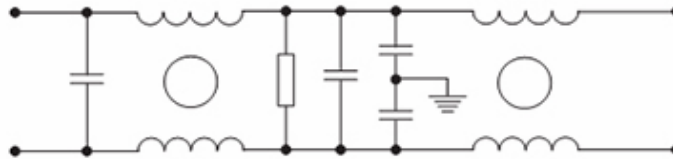
# Product SPECIFICATION SHEET

## DL-3T1

These filters are suitable for use with digital systems such as switch mode power supplies to suppress the continual or intermittent pulse interference especially for low impedance loads.



Model DL-	3T1
Rated Voltage	120 - 250VAC
Rated Current	3A
Operating Frequency	50 / 60Hz
Rated Voltage (1min)	1500VDC (Line - Line)
Test Voltage (1min)	1500VAC (Line - Ground)
Ground Capacitance	3.3nF
Discharge Resistance	1.5MΩ
Leakage Current	≤ 0.5mA



A	B	C	D	E	F
63.5	74.5	93.5	50.5	27.5	Φ4.5

### BRANCH CONTACT DETAILS

Johannesburg 010 202 3300  
Germiston 011 418 9600  
Cape Town 021 510 0710  
Pinetown 031 700 4215  
Riverhorse 031 492 4800

### NATIONAL CALL CENTRE

Sales 010 202 3400  
Technical 010 202 3500

www.acdc.co.za