

# FLIP FLOP PULSE START

# 11-PIN PLUG-IN MODULES



### OVERVIEW

This module will give you many years of service and is guaranteed for 12 months against faulty workmanship and materials. In addition a full repair service is available through ACDC Dynamics branch.

### INSTALLATION

This module should be installed by a competent electrician in accordance with the relevant diagram. Read these instructions carefully to ensure that the functions / settings / control voltage are correct prior to switch on.

### FEATURES

- FNCP1** SPDT 10A / 250VAC relay, • **FNCP2** DPDT 5A / 250VAC relay
- FFCP1** SPDT 10A / 250VAC relay,

### Specifications

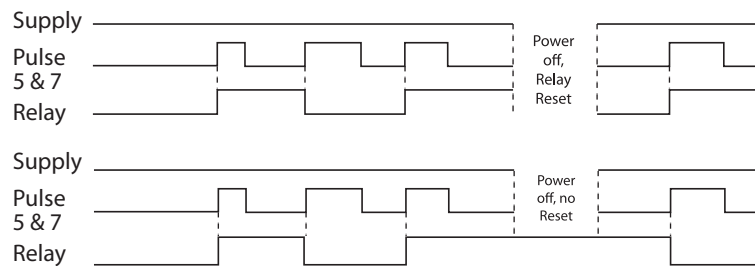
Ambient Temperature	-20°C to 70°C
Power Consumption AC	1.5VA
Power Consumption DC	100mA @ 12VDC
SPDT Relay	10A / 250VAC
Isolation Test Voltage	2kV

### OPERATION (FNCP)

On closure of contact across pin 5 & 7 the relay will energise.  
 On closure of contact across pin 5 & 7 again the relay will de-energise.  
 If the relay is in the ON position and power is removed the relay will reset  
 - No Memory

### OPERATION (FFCP) (Not available in 12VDC)

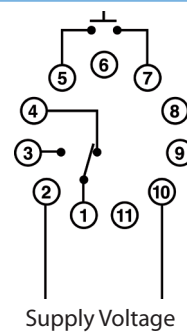
On closure of contact across pin 5 & 7 the relay will energise.  
 On closure of contact across pin 6 & 7 again the relay will de-energise.  
 If power is removed the relay will remain in its last active state  
 - With Memory



### Supply Voltages Available

AC Supply	Galvanic isolation input transformer 12, 24, 48, 115, 230, 400, 525VAC ±15%
DC Supply	12, 24, 48VDC

### Connection Diagram



### BRANCH CONTACT DETAILS

Johannesburg:	010 202 3300
Cape Town:	021 510 0710
Pinetown:	031 700 4215
Germiston:	011 418 9600
Riverhorse:	031 492 4800

### NATIONAL CALL CENTRE

Sales	010 202 3400
Technical	010 202 3500

www.acdc.co.za