

Product SPECIFICATION SHEET

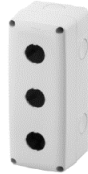
MK27102



MK27101



MK27102



MK27103



MK27104



MK27105



MK27111

A complete versatile system of modular containers able to meet the high protection insulation requirements of the residential, commercial and industrial sectors. Recommended for all outdoor applications which are subject to extreme atmospheric conditions.

MK27101

No. gangs	1	Colour	Grey RAL 7035
Type of knockout holes	Removable with tool	Side entries	2xØ 23
Top entries	1xØ 23	Bottom entries	1xØ 23
IP degree	IP66	Insulation class	II
Mechanical resistance	IK07	Lid screws	Stainless steel
Torque screws tightening	0.8 Newton/meter	Outer dim. LxHxD (mm)	66x82x65

MK27102

No. gangs	2	Colour	Grey RAL 7035
Type of knockout holes	Removable with tool	Side entries	6xØ 23
Top entries	1xØ 23	Bottom entries	1xØ 23
IP degree	IP66	Insulation class	II
Mechanical resistance	IK07	Lid screws	Stainless steel
Torque screws tightening	0.8 Newton/meter	Outer dim. LxHxD (mm)	132x82x65

MK27103

No. gangs	3	Colour	Grey RAL 7035
Type of knockout holes	Removable with tool	Side entries	4xØ 23
Top entries	1xØ 23	Bottom entries	1xØ 23
IP degree	IP66	Insulation class	II
Mechanical resistance	IK07	Lid screws	Stainless steel
Torque screws tightening	0.8 Newton/meter	Outer dim. LxHxD (mm)	66x171x65

MK27104

No. gangs	6	Colour	Grey RAL 7035
Type of knockout holes	Removable with tool	Side entries	4xØ 23
Top entries	3xØ 23	Bottom entries	3xØ 23
IP degree	IP66	Insulation class	II
Mechanical resistance	IK07	Lid screws	Stainless steel
Torque screws tightening	0.8 Newton/meter	Outer dim. LxHxD (mm)	132x171x65

MK27105

No. gangs	12	Colour	Grey RAL 7035
Type of knockout holes	Removable with tool	Side entries	4xØ 23
Top entries	3xØ 23	Bottom entries	3xØ 23
IP degree	IP66	Insulation class	II
Mechanical resistance	IK07	Lid screws	Stainless steel
Torque screws tightening	0.8 Newton/meter	Outer dim. LxHxD (mm)	264x171x65

MK27111

No. gangs	1	Colour	Yellow cover
Type of knockout holes	Removable with tool	Side entries	2xØ 23
Top entries	1xØ 23	Bottom entries	1xØ 23
IP degree	IP66	Insulation class	II
Mechanical resistance	IK07	Lid screws	Stainless steel
Torque screws tightening	0.8 Newton/meter	Outer dim. LxHxD (mm)	66x82x65

BEHAVIOUR WITH CHEMICAL AND ATMOSPHERIC AGENTS

Saline solution	Acids		Bases		Solvents				Mineral oil	UV rays
	Concentrated	Diluted	Concentrated	Diluted	Hexane	Benzol	Acetone	Ethyl alcohol		
Resistant	Not resistant	Resistant	Resistant	Resistant	Limited resistance	Not resistant	Not resistant	Limited resistance	Limited resistance	Limited resistance

BRANCH CONTACT DETAILS

Johannesburg	010 202 3300
Germiston	011 418 9600
Cape Town	021 510 0710
Pinetown	031 700 4215
Riverhorse	031 492 4800