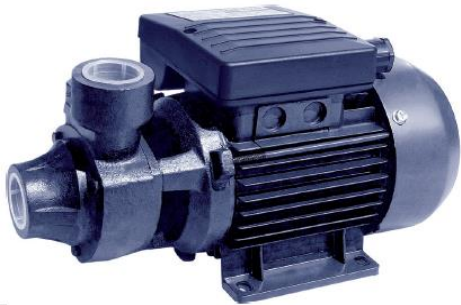


# Product SPECIFICATION SHEET



PER 50M, 60M, 80M, 100M



**Application**

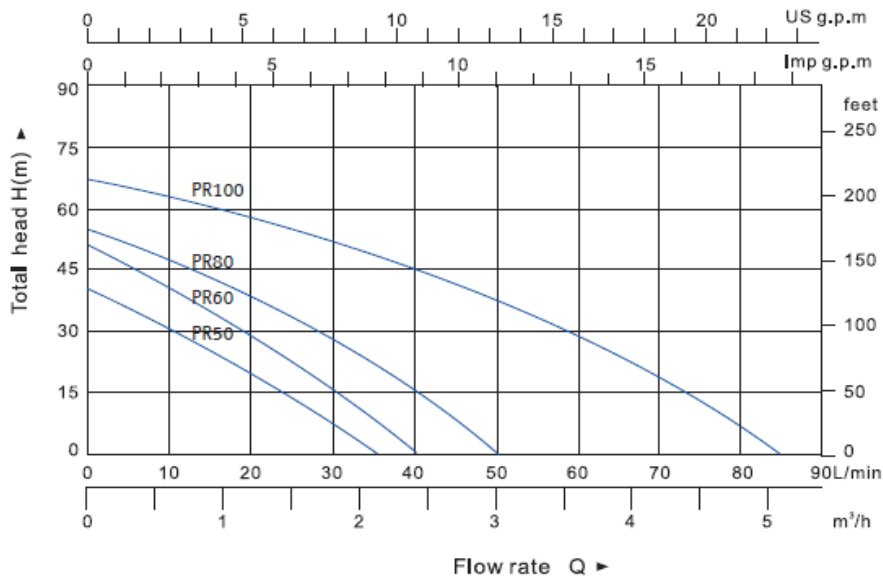
Clean water and liquids without particulate matter and aggressive chemicals, for filling up tanks, water transfer, booster pump for homes with hydropneumatic system.

**Materials**

Pump body and motor bracket:	Cast Iron
Impeller:	Brass
Mechanical seal:	Ceramic and Graphite
Motor shaft:	Stainless Steel

Motor:	Asynchronous two pole induction motor.
Insulation:	Class B
Protection:	IPX4

Single phase with capacitor and built-in thermal protection.



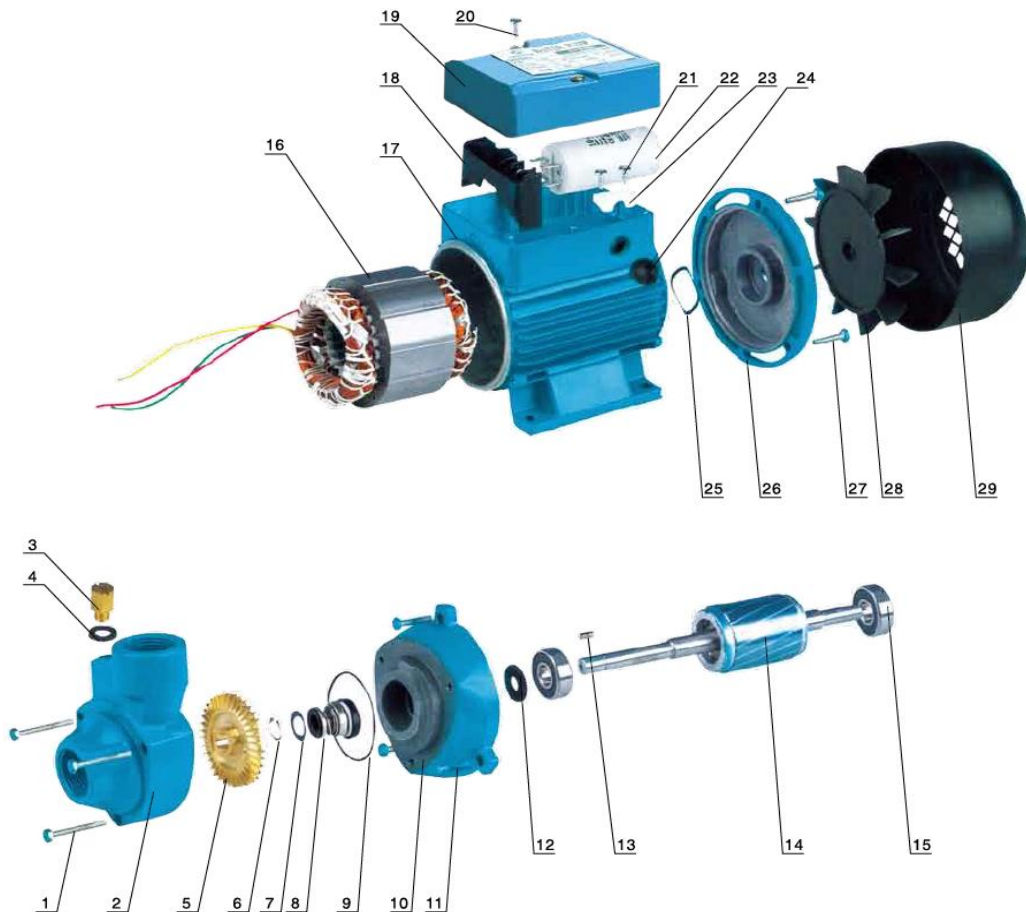
Code	Voltage	Power		Amps	Max Head (m)	Max Flow (l/min)	In / Out (Inch)
		KW	HP				
PR 50M	230VAC	0,37	0,5	2,4	35	35	1 x 1
PR 60M	230VAC	0,55	0,75	4,9	50	40	1 x 1
PR 80M	230VAC	0,75	1	6,2	58	50	1 x 1
PR 100M	230VAC	1,1	1,5	7,6	68	85	1 x 1

**BRANCH CONTACT DETAILS**  
 Johannesburg 010 202 3300  
 Germiston 011 418 9600  
 Cape Town 021 510 0710  
 Pinetown 031 700 4215  
 Riverhorse 031 492 4800

**NATIONAL CALL CENTRE**  
 Sales 010 202 3400  
 Technical 010 202 3500  
[www.acdc.co.za](http://www.acdc.co.za)

# Product SPECIFICATION SHEET

PR 50M, 60M, 80M, 100M



NO.	DESCRIPTION	NO.	DESCRIPTION	NO.	DESCRIPTION
1	Pump Body Screw	12	Splash Guard	23	Cable Presser
2	Pump Body	13	Key	24	Waterproof Fairlead
3	Filling Plug	14	Shaft and Rotor	25	Ajustable Ring
4	"O" Ring for Filling Plug	15	Ball Bearing	26	Motor Cover
5	Impeller	16	Stator	27	Motor Cover-motor Case Screw
6	Circlip	17	Motor Case	28	Fan
7	Plain Washer	18	Terminal Board	29	Fan Cover
8	Mechanical Seal	19	Terminal Cover		
9	"O" Ring for Pump Body	20	Screw for Terminal Box Fixing		
10	Motor Bracket	21	Screw for Cable Presser		
11	Screw for Motor Bracket	22	Capacitor		

**BRANCH CONTACT DETAILS**

Johannesburg 010 202 3300  
Germiston 011 418 9600  
Cape Town 021 510 0710  
Pinetown 031 700 4215  
Riverhorse 031 492 4800

**NATIONAL CALL CENTRE**

Sales 010 202 3400  
Technical 010 202 3500

[www.acdc.co.za](http://www.acdc.co.za)