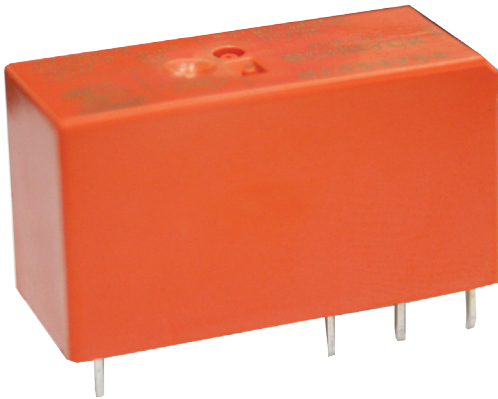


RT424

Relays SPECIFICATION SHEET



POWER PCB RELAY RT424 BISTABLE (1 & 2 COIL) RELAYS

Typical applications: Battery powered equipment or applications with "memory function".

- 2 pole 5A, 2 form C (CO) contacts
- Polarized bistable version with 1 or 2 coils
- 5kV/10mm coil-contact
- Reinforced insulation

CONTACT DATA

Contact Arrangement	2 FORM C (CO)
Rated Voltage	250VAC
Max. Switching Voltage	400VAC
Rated Current	5A, UL: 10A
Limiting Continuous Current	5A, UL: 10A
Breaking Capacity Max	2000VA
Contact Material	AgNi 90/10
Freq. of Op. with/without load	900/7200h ⁻¹
Operate/Reset Time Max	10/5ms
Bounce Time Max. Form A/Form B	4/9ms

INSULATION DATA

Initial Dielectric Strength	
- between open contacts	1000V _{ms}
- between contact and coil	5000V _{ms}
- between adjacent contacts	2500V _{ms}
Clearance / Creepage	
- between contact and coil	≥ 10/10mm
- between adjacent contacts	≥ 3/4mm
Material group of insulation parts	IIIa
Tracking index of relay base	PTI 250V

OTHER DATA

Ambient Temperature	
- Bistable 1 Coil	- 10 to 85°C
- Bistable 2 Coils	- 40 to 85°C
Cat. of Environmental Protection	
- IEC61810	RTII - flux proof RTIII - wash tight
Vibration/Shock Resistance (funct.)	
- Opening B Contact	3/5g
- Opening Closed A Contact	6/15g
Shock Resistance (Destructive)	100g
Material Compliance*	EU RoHS/ELV, China RoHS, REACH

* Refer to the Product Compliance Support Center at www.te.com/customer-support/rohssupportcenter

COIL DATA - BISTABLE COILS

	A12 - 1 COIL	F12 - 2 COILS
Magnetic System	Polarized, Bistable	
Coil Voltage Range	3 - 48VDC	
Operative Range (IEC61810)	2	
Limiting Voltage, % of Rated Volts	120%	120%
Min/Max Energization Duration	30ms/1 min at <10% Duty Factor	
Coil Insulation System Accord. UL	Class F	

COIL VERSIONS - BISTABLE COILS

	A12 - 1 COIL	F12 - 2 COILS
Rated Voltage	12/24VDC	12/24VDC
Set Voltage	8.4VDC	8.4VDC
Reset Voltage	6.6VDC	6.6VDC
Coil Resistance	360 Ω±10%	240 Ω±10%
Rated Coil Power	400mW	600mW

BISTABLE COILS OPERATION

	A12 - 1 COIL		F12 - 2 COILS		
Coil Terminals	A1	A2	A1	A2	A3
Operate	+	-	+	-	-
Reset	-	+	-	+	

CODE

CODE	COIL VERSION	COIL
RT424A12	Bistable 1 Coil	12VDC
RT424A24	Bistable 1 Coil	24VDC
RT424F12	Bistable 2 Coils	12VDC
RT424F24	Bistable 2 Coils	24VDC

BRANCH CONTACT DETAILS

Johannesburg	010 202 3300
Germiston	011 418 9600
Cape Town	021 510 0710
Pinetown	031 700 4215
Riverhorse	031 492 4800

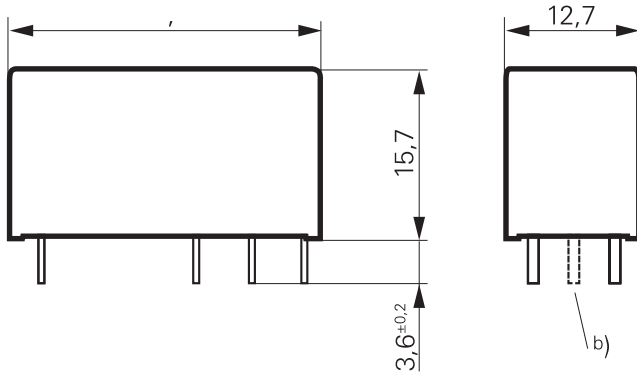
Contact Us
Today!

NATIONAL CALL CENTRE

Sales 010 202 3400
Technical 010 202 3500

www.acdc.co.za

Outline Dimensions



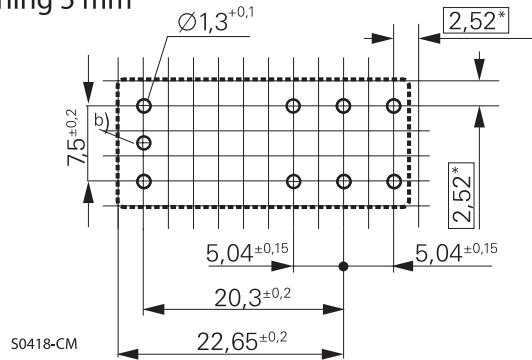
a) Indicated contact position while or after coil energization with reset voltage.

b) for 2 coil version only

PCB Layout / Terminal Assignment

Bottom view on solder pins

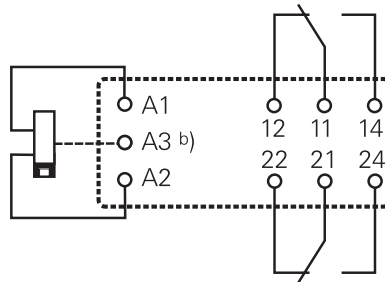
8 A, Pinning 5 mm



*) With the recommended PCB hole sizes a grid pattern from 2.5 mm to 2.54 mm can be used.

2 form C (CO) contacts

a)



BRANCH CONTACT DETAILS

Johannesburg	010 202 3300
Germiston	011 418 9600
Cape Town	021 510 0710
Pinetown	031 700 4215
Riverhorse	031 492 4800

Contact Us
Today!

NATIONAL CALL CENTRE

Sales 010 202 3400
Technical 010 202 3500

www.acdc.co.za