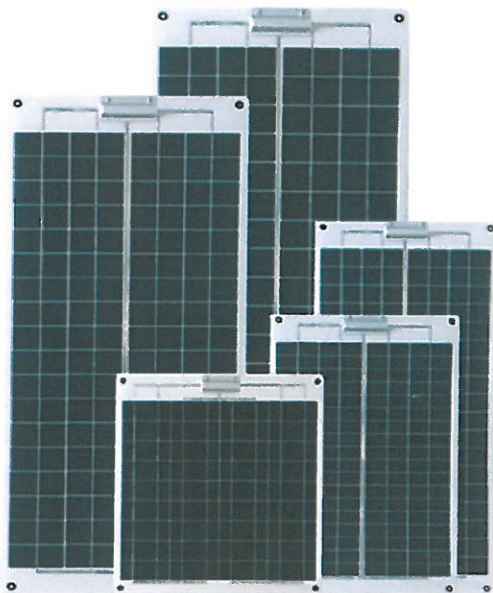
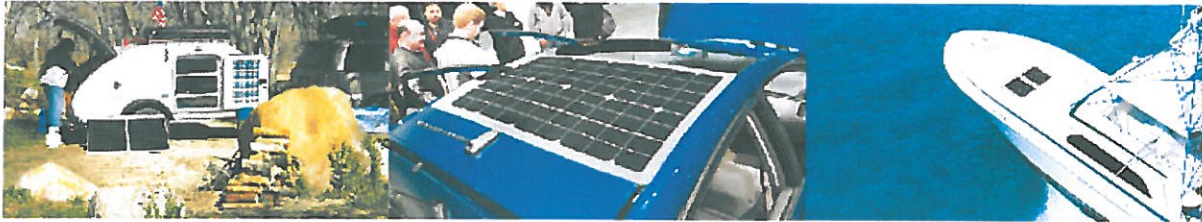


## Semi-flexible Solar Panels

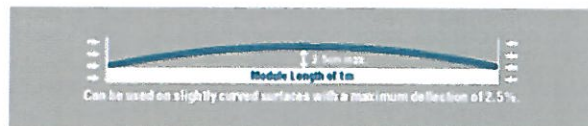
The SLPF Series of Semi-Flexible solar panels are specifically designed for the marine industry. The aesthetic design utilizes components and workmanship of the highest quality, including high efficient multicrystalline cells which ensure a high power output.



10W~50W

### Features

- Non-Glass Design
- Semi-Flexible with Aluminum Backing
- Fully Weatherproof & Lightweight Design
- Unbreakable Protective Plastic Film Coating
- Easy Installation



Model	SLPF010-12A1	SLPF020-12A1	SLPF030-12A1	SLPF040-12A1	SLPF050-12A1
Max. Power(Pmax)	10W	20W	30W	40W	50W
Voltage at Pmax(Vmp)	18V	18V	18V	18V	18V
Current at Pmax(Imp)	0.59A	1.05A	1.58A	2.11A	2.63A
Open-circuit voltage(Voc)	24V	24V	24V	24V	24V
Short-circuit current(Isc)	0.58A	1.16A	1.74A	2.39A	2.99A
Dimensions (mm)	350x350x16	610x350x16	770x350x16	770x450x16	930x450x16