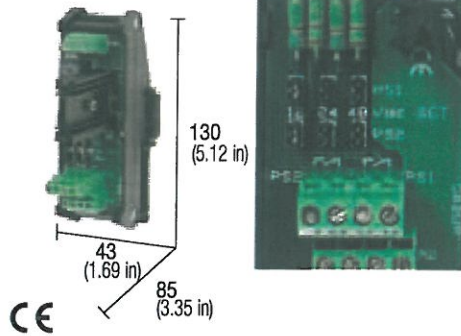




Accessory for power supplies redundant parallel connections

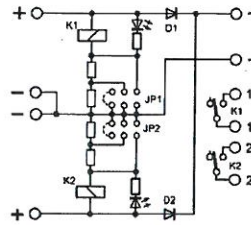
- Suitable for power supplies without Oring diodes
- Compact dimensions
- Three selectable voltages 12, 24 and 48 Vdc
- 2 status/relays contacts
- Power supplied status LED



NOTES

The depth dimension includes the terminal blocks and the DIN rail clamp.

BLOCK DIAGRAM



VERSIONS

God. XCSBD

APPLICATIONS

This module allows the customer to connect in redundant parallel two power supplies not provided with built in Oring diodes (output decoupling diodes); a jumper bridge allows to select 12, 15, 24 or 48 Vdc operating voltage; each channel is provided with status indication led, status relay and contact for remote failure alarm.

GENERAL TECHNICAL DATA

Power supply rated voltage	12-24-48 Vdc selectable
Power supply rated current	15 A, max 30 A
Load rated voltage	12-24-48 Vdc selectable
Load max current	15 A
IN/OUT drop voltage	0.7 V @ 15 A
Protections	—
Alarm signal	2 contacts NA 2A @ 230 Vac
Operating temperature range	-20...+50°C
Reference Standards	IEC 664-1, DIN VDE
Overvoltage category/Pollution degree	II / 2
Protection degree	IP 00 IEC 529, EN60529
Connection terminal	2.5 mm ² fixed screw type
Housing material	UL94V-0 plastic material
Approx. weight	120 g (4.23 oz)
Mounting information	vertical on rail, adjacent

CSBD

12-24-48 Vdc selectable

15 A, max 30 A

12-24-48 Vdc selectable

15 A

0.7 V @ 15 A

2 contacts NA 2A @ 230 Vac

-20...+50°C

IEC 664-1, DIN VDE

II / 2

IP 00 IEC 529, EN60529

2.5 mm² fixed screw type

UL94V-0 plastic material

120 g (4.23 oz)

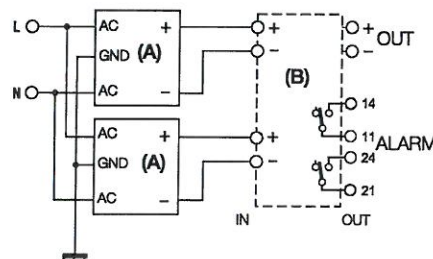
vertical on rail, adjacent

MOUNTING ACCESSORIES

Mounting rail type according to IEC60715/TH35-7.5
Mounting rail type according to IEC60715/G32

PR/3/AC, PR/3/AC/ZB, PR/3/AS, PR/3/AS/ZB
PR/DIN/AC, PR/DIN/AS, PR/DIN/AL

Block diagram



(A) Power supply

(B) CSBD